

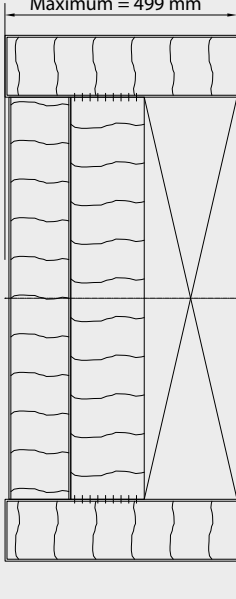
VARIFLEX

WA Variflex 100 K

Wandanschluss / Wall abutment (WA)

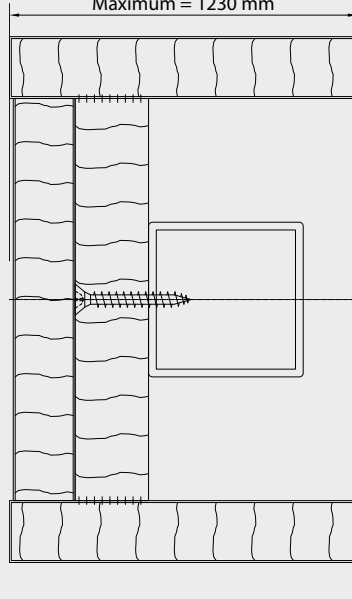
Wandanschluss /
Wall abutment

TM
Minimum = 60 mm
Maximum = 499 mm



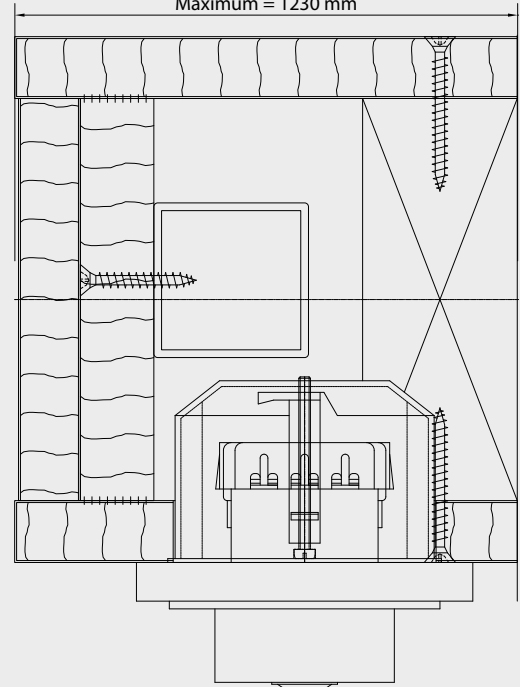
Wandanschluss mit Stütze /
Wall abutment with tube

TM
Minimum = 90 mm
Maximum = 1230 mm



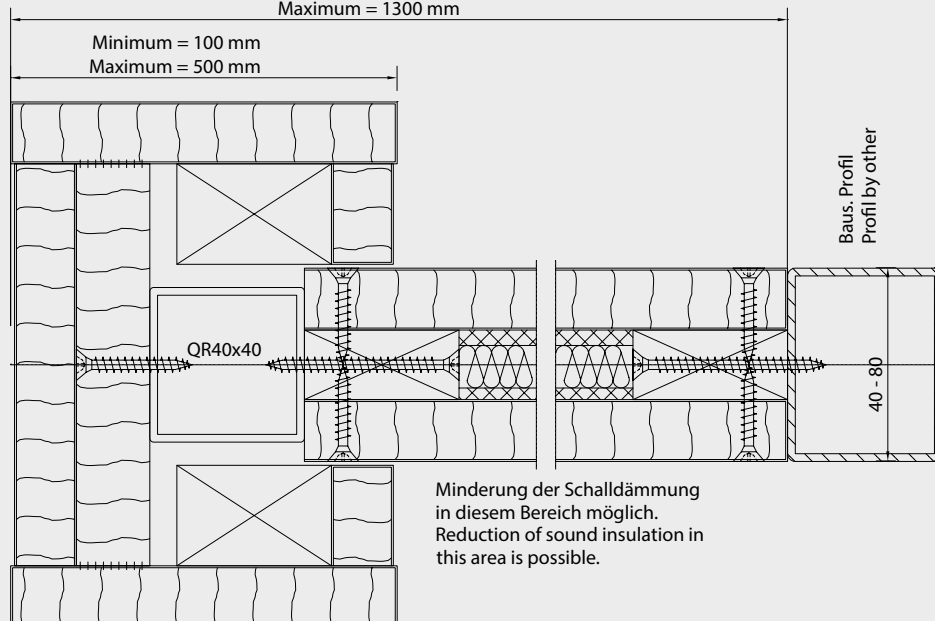
Wandanschluss mit Schlüsselschalter /
Lock profile with key switch

TM
Minimum = 130 mm
Maximum = 1230 mm



Wandanschluss verjüngt /
Wall abutment reduced

TM
Minimum = 200 mm
Maximum = 1300 mm



Minderung der Schalldämmung
in diesem Bereich möglich.
Reduction of sound insulation in
this area is possible.